

# **Blight Bootcamp**

## **Resident- Led Advocacy Session**

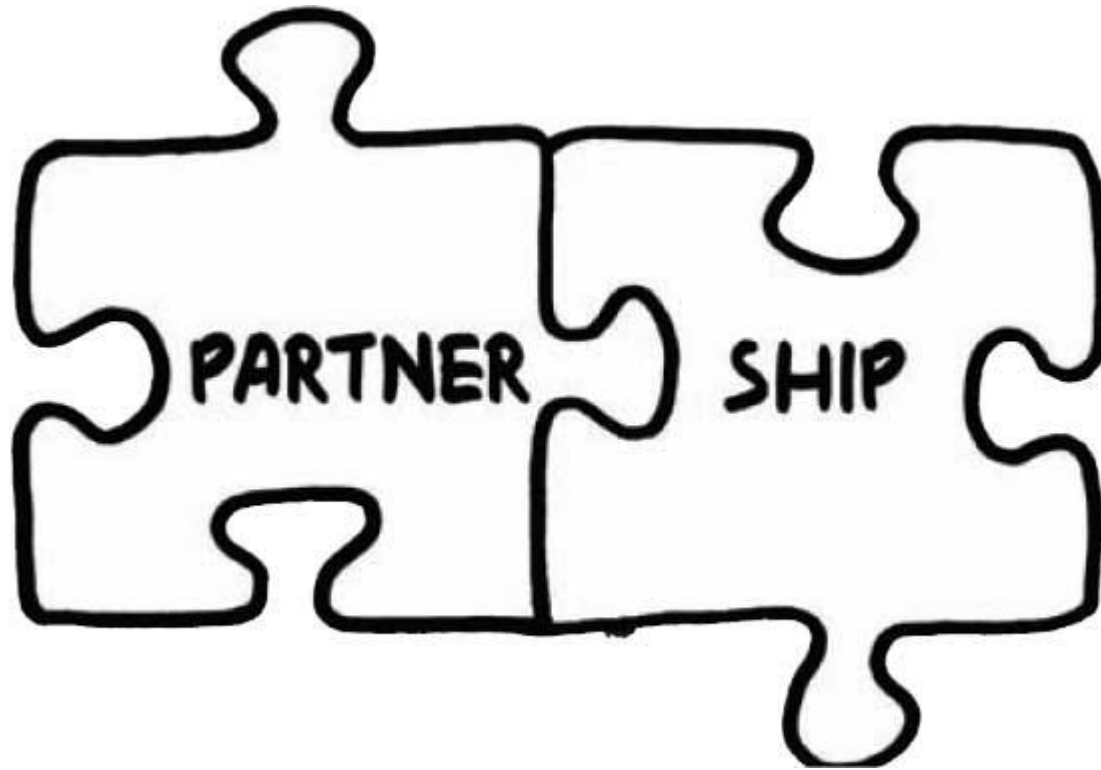
Goal: To inform on ways to eliminate blight thru  
resident-led advocacy via **PARTNERSHIPS**

Angela Williams  
GTECH Ambassador, ReClaim Northside

# Resident-Led Advocacy via PARTNERSHIPS

- Who “Residents” = Stakeholder definition
- What Advocate = support, promote, back, crusade, be a proponent for...
- Why To obtain desired results/ achieve goals
- When AMAP whenever relevant
- Where Public w/ other stakeholders: residents, gov’t, businesses, non-profits
- How Engage: research, develop a plan, communicate & implement

# Resident-Led Advocacy via PARTNERSHIPS

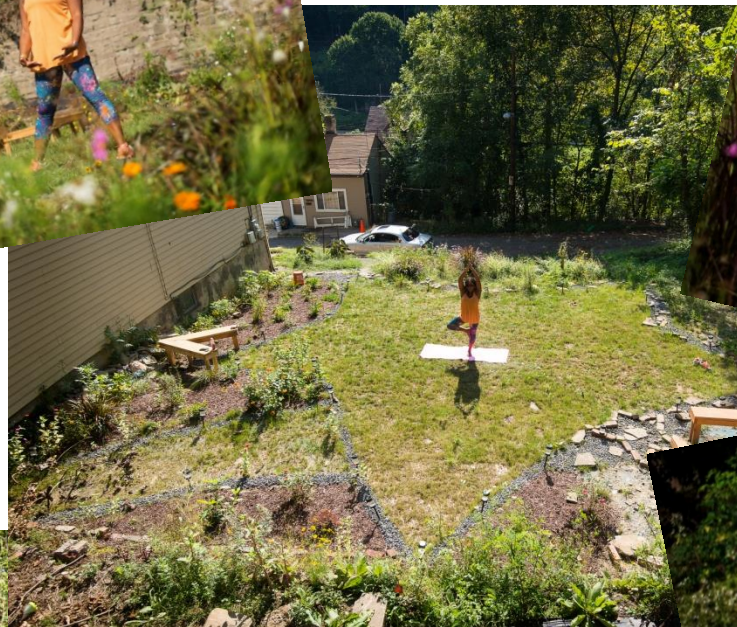


[No man is an island, entire of itself... John Donne poem](#)

# Personal Testimony: GTECH Ambassador, Star Meditation Garden

- Engaged- my neighborhood, Perry South in 2011
  - CBO= Charles Street Area Council, President →
  - non-profits:
    - [Northside Leadership Conference](#) Awardee, VP →
    - CORO- NextLeaders Northside- [Back to School Bag](#)
    - CDC= Northside Community Development Fund
    - CSAC- [Urban Rain Garden – Bright Chuck Point](#)
    - GTECH ReClaim Ambassador- [Star Meditation Garden](#)

# Outcome: Star Meditation Garden



**Blight →  
Pretty sight!**



# Resident-Led Advocacy via PARTNERSHIPS

- Who “Residents” = Stakeholder definition
- What Advocate = support, promote, back, crusade, be a proponent for...
- Why To obtain desired results/ achieve goals
- When AMAP whenever relevant
- Where Publically w/ other stakeholders: residents, gov’t, businesses, non-profits
- How Engage: research, develop a plan, communicate & implement

# Next Level Relationships/ Growth

Northside Vacant Structures Task Force:

NSLC Staff funded by Buhl Foundation

To engage residents who meet monthly to  
Identify strategies to eliminate various types of  
abandoned vacant structures  
in represented neighborhoods

# TAKEAWAYS

## Resident-Led Advocacy via Partnerships

- ADVOCATE
  - DEVELOP A PLAN
    - ENGAGE STAKEHOLDERS
- COMMUNICATE AT ALL LEVELS
- MAKE PEOPLE ACCOUNTABLE
  - LEVERAGE STRENGTHS
  - IMPLEMENT YOUR PLAN
- GET A SEAT AT THE TABLE OR YOU WILL NOT KNOW WHAT IS GOING ON UNTIL IT'S DONE!



# THANK YOU

- Questions?
- Comments?
- Concerns?

Thank you for letting me share.

Remember....

Don't be afraid to be the only one!

