

Western Pennsylvania Conservancy



water, land, life.

The Western Pennsylvania Conservancy **GARDENS & GREENSPACE PROGRAM**

A current project overview

Established in 1932 as the Greater Pittsburgh Parks Association

First project (right):
Bigelow Boulevard park
creation after
landslide, 1936

Conservation efforts
(below): Beginning efforts
for Moraine State Park,
Butler County in the mid-
1940s



WPC Community Gardens and Greenspace Program



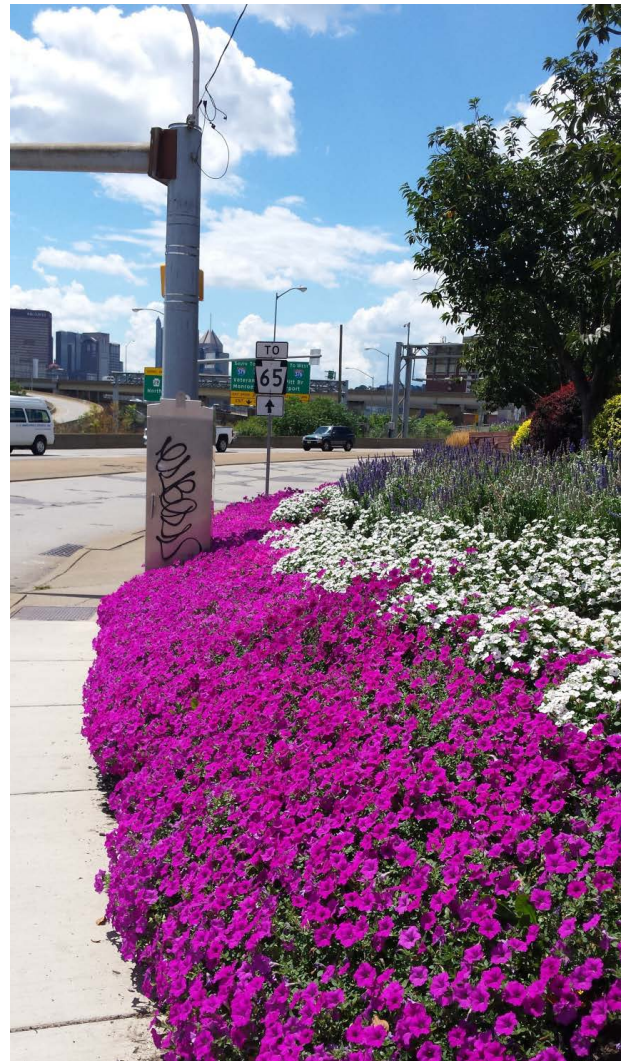








2015 SUMMER SEASON





COMPONENT EXAMPLES



1- Perennial flowers | 2 - Field Staff | 3 - Ecosystem value: a nest of voles found in one of our gardens | 4 - Annual flowers | 5 - Volunteers in front of a landmark | 6 - Irrigation system

Western Pennsylvania Conservancy | COMMUNITY GARDENS PROGRAM

QUICK STATS



- 132 gardens in 20 counties
- Many flower gardens have been growing for 3 decades



- Over 120 Stewards
- 12,000 volunteers per year

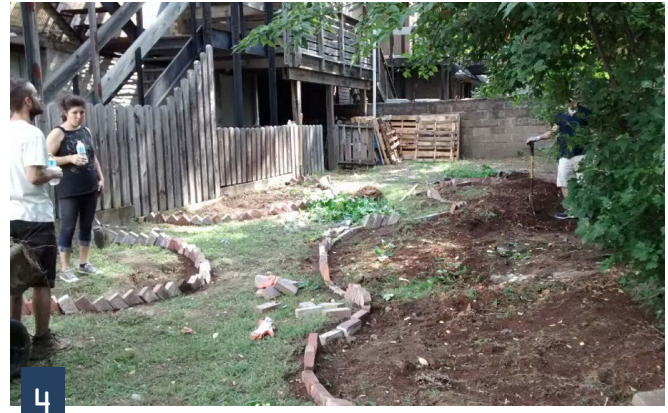


- Over 70% of community gardens have trees and perennials



- Over 90,000 square feet of annual beds
- Over 141,000 flowers planted in gardens in the spring of 2015

VEGGIE GARDENS



- 1- **Allegheny Grows:** installing an irrigation trench in Mount Oliver
- 2- **Sampson Foundation Grant:** installing vegetable beds at the Sankofa Garden
- 3- **Sustainability funds:** finishing up a pathway installed for the Carnegie Mellon vegetable garden.
- 4- **Sampson Foundation:** Edging installation

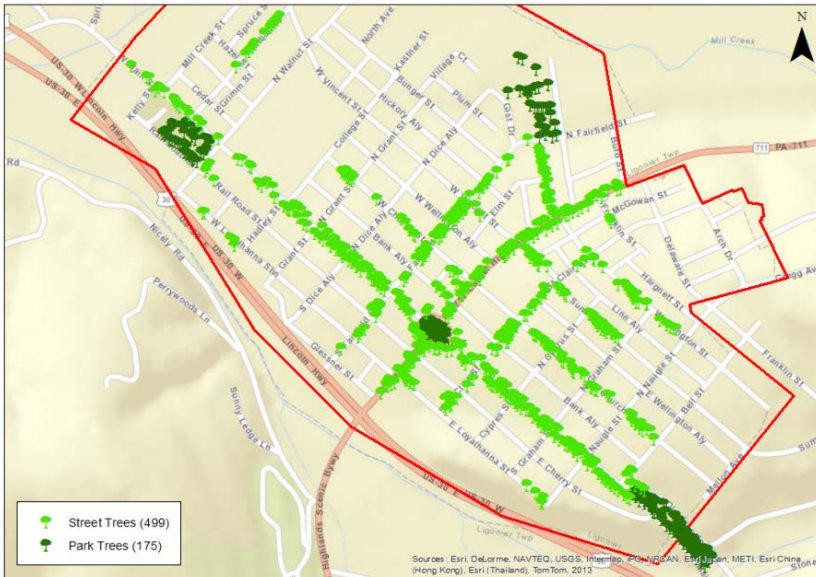
TREEVITALIZE PITTSBURGH

- Began in 2008, goal to restore tree canopy cover
- Public/private partnership
[Western Pennsylvania Conservancy, City of Pittsburgh, Allegheny County, Tree Pittsburgh, Department of Conservation and Natural Resources]
- Community application based
- Spring and Fall tree plantings with volunteers
- 25,000 trees planted to date



TREES FOR LIGONIER

- Tree Inventory
- iTree Benefits Analysis
- Community Tree Plantings



TREES OF ERIE



- 1- Tree Installation with community volunteers
- 2- Street after tree installation
- 3- Trees ready to be unloaded

DOWNTOWN HANGING BASKETS

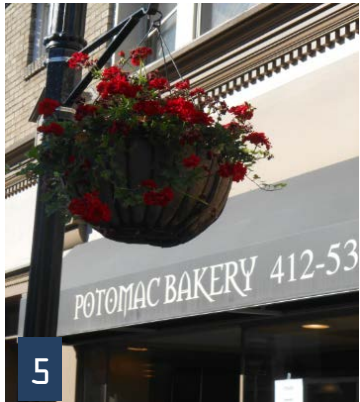
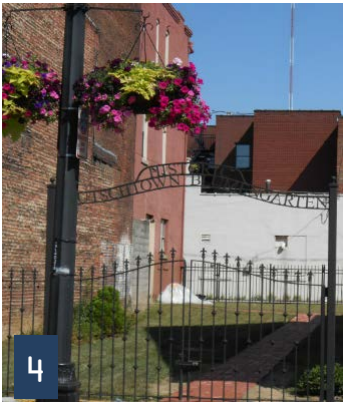
- 1- Baskets lined up at First & Grant
- 2- Baskets hanging on the Andy Warhol Bridge
- 3- Hanging baskets event with Mayor Peduto at Market Square
- 4- Bridge Basket Watering



NEIGHBORHOOD HANGING BASKETS



- 1- The Hill District
- 2- Allegheny West
- 3- East Liberty
- 4- East Ohio Street
- 5- Dormont



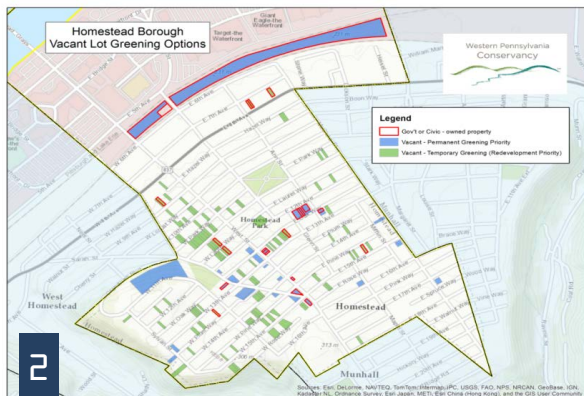
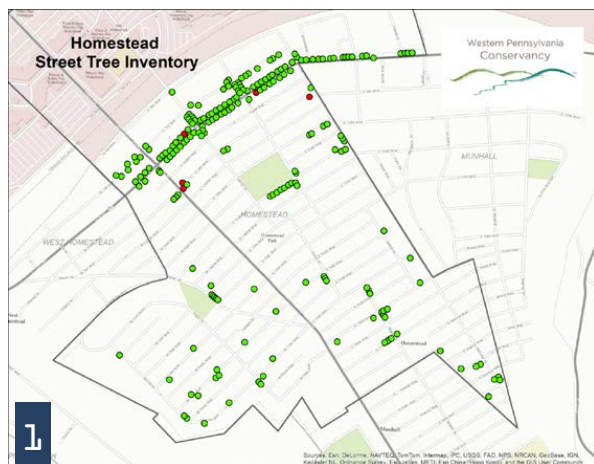
DOWNTOWN PLANTERS



DOWNTOWN GREENER LOT

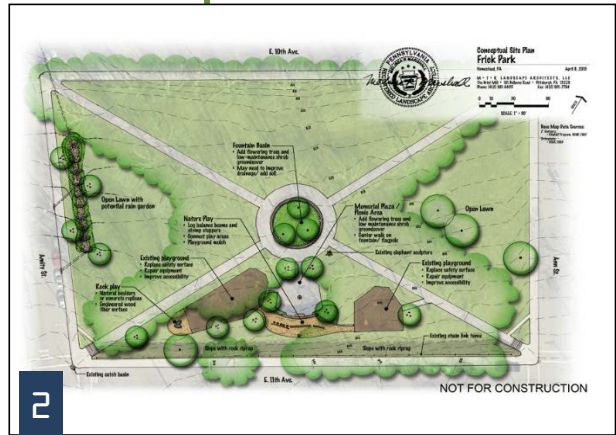


HOMESTEAD GREEN SCAN | ANALYSIS

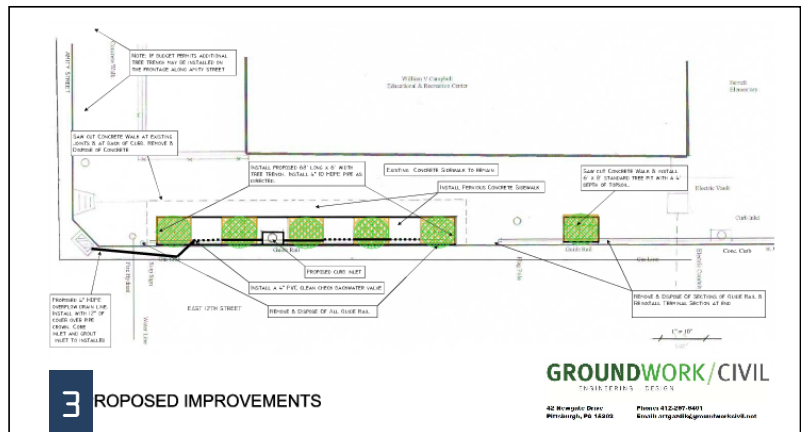


- 1- Street Tree inventory
- 2- Locations for potential greening
- 3- On-site street analysis

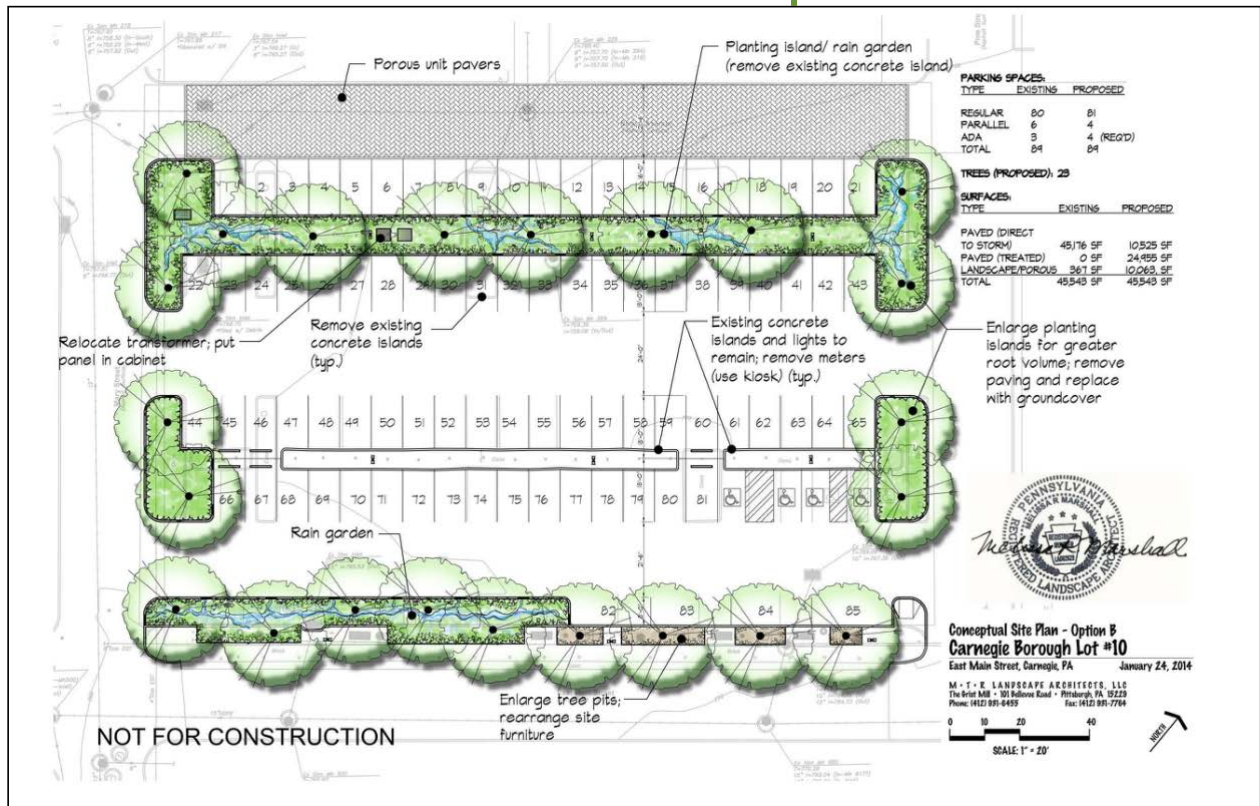
HOMESTEAD GREEN SCAN | PROPOSALS



- 1- Mapping: Storm shed spots
- 2- Customized design: Frick Park play space
- 3 - Customized design: Barrett Elementary tree trench



CARNEGIE GREEN SCAN | PROPOSAL



Proposed Greening plan for a borough parking lot

CARNEGIE GREEN SCAN | IMPLEMENTING

1&2 - Construction first phase
3 - Construction second phase



IN-PROGRESS PROJECTS | ROUTE 51



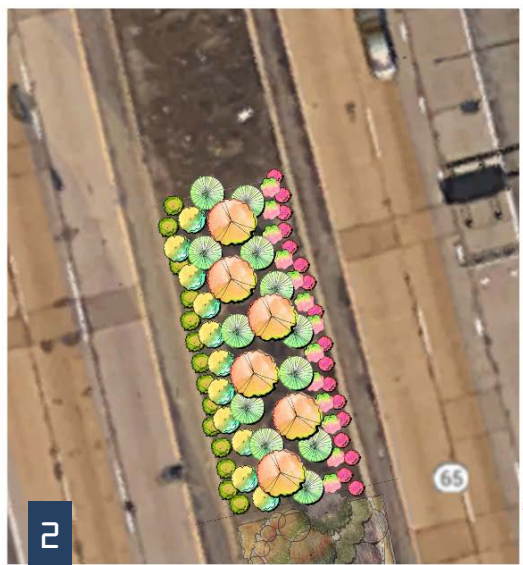
ROUTE 51 & Curry Hollow

SCALE: 1" = 25' |

- Colorado Spruce
- River Birch
- Honeylocust
- Eastern Redbud
- Serviceberry



IN-PROGRESS PROJECTS | ROUTE 65



RT 65

PROPOSED LAYOUT 1
BED INSTALLATION PART 2



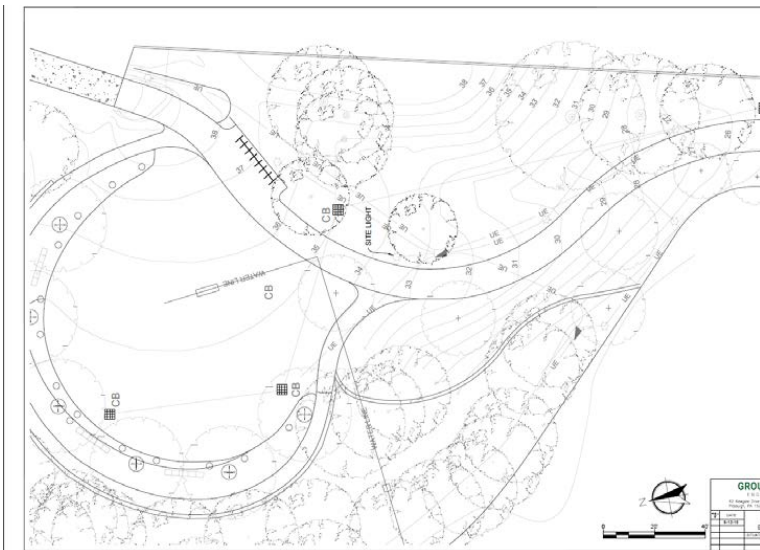
0 10 20 30

PLANT SELECTION

-  Russian sage
-  Knockout rose
-  Daylily
-  Forsythia
-  Juniper
-  Serviceberry

- 1- **Initial installation:** Test bed to gauge survival rate
- 2- **Phase 2:** Designated for higher impact. Installation pending.

BIOSWALES – MILLVALE & POINT STATE PARK



BATES STREET



- 1- Plant variation: Redbuds and Tulips
- 2- Volunteers weeding
- 3- Goats weeding

SCHOOL GREENING



1



2



3

- 1- Peabody
- 2- Crescent early childhood
- 3- Carmalt Play Deck after installation